

Septin 14 Polyclonal Antibody

Description

Product type	Primary Antibody
Code	BT-AP08218
Host	Rabbit
Isotype	IgG
Size	20ul, 50ul, 100ul
Immunogen	The antiserum was produced against synthesized peptide derived from human SEPT14. AA range:341-390
Mol wt	50025
Species reactivity	Human
Clonality	Polyclonal
Recommended application	WB, ELISA
Concentration	1 mg/ml
Full name	Septin 14 Antibody
Synonyms	SEPT14; Septin-14

This product is for research use only, not for use in human, therapeutic or diagnostic procedure.

Background

SEPT14 is a member of the highly conserved septin family of GTP-binding cytoskeletal proteins implicated in membrane transport, apoptosis, cell polarity, cell cycle regulation, cytokinesis, and other cellular functions.

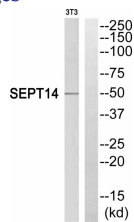
Recommended Dilution

WB: 1: 500 - 1: 2000

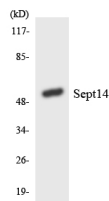
ELISA: 1: 40000

Not yet tested in other applications.

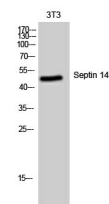
Images



Western blot analysis of SEPT14 Antibody. The lane on the right is blocked with the SEPT14 peptide.



Western blot analysis of the lysates from Jurkat cells using SEPT14 antibody.



Western Blot analysis of 3T3 cells using Septin 14 Polyclonal Antibody

Storage

-20°C for one year

501 Changsheng S Rd, Nanhu Dist, Jiaxing, Zhejiang, China

Tel: 86 21 31007137 | E-mail: save@bt-laboratory.com | www.bt-laboratory.com