

## Septin 2 Polyclonal Antibody

### Description

<b>Product type</b>	Primary Antibody
<b>Code</b>	BT-AP08219
<b>Host</b>	Rabbit
<b>Isotype</b>	IgG
<b>Size</b>	20ul, 50ul, 100ul
<b>Immunogen</b>	The antiserum was produced against synthesized peptide derived from human SEPT2. AA range:103-152
<b>Mol wt</b>	41487
<b>Species reactivity</b>	Human, Mouse, Rat
<b>Clonality</b>	Polyclonal
<b>Recommended application</b>	WB, ELISA
<b>Concentration</b>	1 mg/ml
<b>Full name</b>	Septin 2 Antibody
<b>Synonyms</b>	SEPT2; DIFF6; KIAA0158; NEDD5; Septin-2; Neural precursor cell expressed developmentally down-regulated protein 5; NEDD-5

**This product is for research use only, not for use in human, therapeutic or diagnostic procedure.**

### Background

SEPT2 (Septin 2) is a Protein Coding gene. Diseases associated with SEPT2 include gastrointestinal anthrax and acute orbital inflammation. Among its related pathways are Bacterial invasion of epithelial cells and ERK Signaling. GO annotations related to this gene include GTP binding and enzyme regulator activity. An important paralog of this gene is SEPT6.

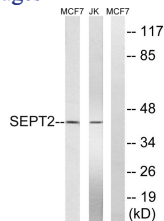
### Recommended Dilution

WB: 1: 500 - 1: 2000

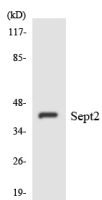
ELISA: 1: 20000

Not yet tested in other applications.

### Images



Western blot analysis of lysates from Jurkat and MCF-7 cells, using SEPT2 Antibody. The lane on the right is blocked with the synthesized peptide.



Western blot analysis of the lysates from HepG2 cells using SEPT2 antibody.

## Storage

-20°C for one year

501 Changsheng S Rd, Nanhu Dist, Jiaxing, Zhejiang, China

Tel: 86 21 31007137 | E-mail: [save@bt-laboratory.com](mailto:save@bt-laboratory.com) | [www.bt-laboratory.com](http://www.bt-laboratory.com)