

Septin 3 Polyclonal Antibody

Description

Product type	Primary Antibody
Code	BT-AP08220
Host	Rabbit
Isotype	IgG
Size	20ul, 50ul, 100ul
Immunogen	The antiserum was produced against synthesized peptide derived from human SEPT3. AA range:136-185
Mol wt	40704
Species reactivity	Human, Mouse, Rat
Clonality	Polyclonal
Recommended application	WB, ELISA
Concentration	1 mg/ml
Full name	Septin 3 Antibody
Synonyms	SEPT3; SEP3; Neuronal-specific septin-3

This product is for research use only, not for use in human, therapeutic or diagnostic procedure.

Background

SEPT3 belongs to the septin family of GTPases. Members of this family are required for cytokinesis. Expression is upregulated by retinoic acid in a human teratocarcinoma cell line. The specific function of this gene has not been determined. Alternative splicing of this gene results in two transcript variants encoding different isoforms.

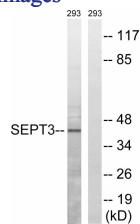
Recommended Dilution

WB: 1: 500 - 1: 2000

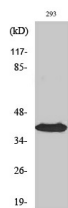
ELISA: 1: 20000

Not yet tested in other applications.

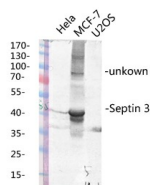
Images



Western blot analysis of lysates from 293 cells, using SEPT3 Antibody. The lane on the right is blocked with the synthesized peptide.



Western Blot analysis of various cells using Septin 3 Polyclonal Antibody diluted at 1:1000



Western blot analysis of various lysis using Septin 3 Polyclonal Antibody diluted at 1:1000. Secondary antibody was diluted at 1:20000

Storage

-20°C for one year

501 Changsheng S Rd, Nanhu Dist, Jiaxing, Zhejiang, China

Tel: 86 21 31007137 | E-mail: save@bt-laboratory.com | www.bt-laboratory.com