

Septin 6 Polyclonal Antibody

Description

Product type	Primary Antibody
Code	BT-AP08222
Host	Rabbit
Isotype	IgG
Size	20ul, 50ul, 100ul
Immunogen	The antiserum was produced against synthesized peptide derived from human SEPT6. AA range:223-272
Mol wt	49717
Species reactivity	Human, Mouse, Rat
Clonality	Polyclonal
Recommended application	WB, IHC-p, ELISA
Concentration	1 mg/ml
Full name	Septin 6 Antibody
Synonyms	SEPT6; KIAA0128; SEP2; Septin-6

This product is for research use only, not for use in human, therapeutic or diagnostic procedure.

Background

SEPT6 is a member of the septin family of GTPases. Members of this family are required for cytokinesis. One version of pediatric acute myeloid leukemia is the result of a reciprocal translocation between chromosomes 11 and X, with the breakpoint associated with the genes encoding the mixed-lineage leukemia and septin 2 proteins. SEPT6 encodes four transcript variants encoding three distinct isoforms. An additional transcript variant has been identified, but its biological validity has not been determined.

Recommended Dilution

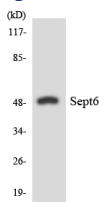
WB: 1: 500 - 1: 2000

IHC: 1: 100 - 1: 300

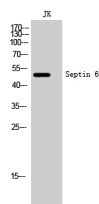
ELISA: 1: 40000

Not yet tested in other applications.

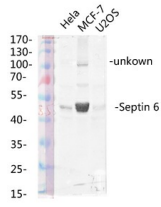
Images



Western blot analysis of the lysates from HeLa cells using SEPT6 antibody.



Western Blot analysis of JK cells using Septin 6 Polyclonal Antibody diluted at 1:1000



Western blot analysis of various lysis using Septin 6 Polyclonal Antibody diluted at 1:1000. Secondary antibody was diluted at 1:20000

Storage

-20°C for one year

501 Changsheng S Rd, Nanhu Dist, Jiaxing, Zhejiang, China

Tel: 86 21 31007137 | E-mail: save@bt-laboratory.com | www.bt-laboratory.com