

Septin 7 Polyclonal Antibody

Description

Product type	Primary Antibody
Code	BT-AP08223
Host	Rabbit
Isotype	IgG
Size	20ul, 50ul, 100ul
Immunogen	The antiserum was produced against synthesized peptide derived from human SEPT7. AA range:350-399
Mol wt	50680
Species reactivity	Human, Mouse, Rat
Clonality	Polyclonal
Recommended application	WB, IHC-p, ELISA
Concentration	1 mg/ml
Full name	Septin 7 Antibody
Synonyms	SEPT7; CDC10; Septin-7; CDC10 protein homolog

This product is for research use only, not for use in human, therapeutic or diagnostic procedure.

Background

SEPT7 encodes septin-7 that is highly similar to the CDC10 protein of *Saccharomyces cerevisiae*. The protein also shares similarity with Diff 6 of *Drosophila* and with H5 of mouse. Each of these similar proteins, including the yeast CDC10, contains a GTP-binding motif. The yeast CDC10 protein is a structural component of the 10 nm filament which lies inside the cytoplasmic membrane and is essential for cytokinesis. This human protein functions in gliomagenesis and in the suppression of glioma cell growth, and it is required for the association of centromere-associated protein E with the kinetochore. Alternative splicing results in multiple transcript variants. Several related pseudogenes have been identified on chromosomes 5, 7, 9, 10, 11, 14, 17 and 19.

Recommended Dilution

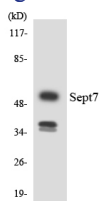
WB: 1: 500 - 1: 2000

ELISA: 1: 20000

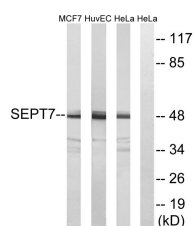
IHC-p: 1: 50 - 300

Not yet tested in other applications.

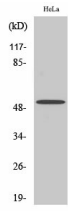
Images



Western blot analysis of the lysates from HUVEC cells using SEPT7 antibody.



Western blot analysis of lysates from HeLa, HUVEC, and MCF-7 cells, using SEPT7 Antibody. The lane on the right is blocked with the synthesized peptide.



Western Blot analysis of various cells using Septin 7 Polyclonal Antibody

Storage

-20°C for one year

501 Changsheng S Rd, Nanhu Dist, Jiaxing, Zhejiang, China

Tel: 86 21 31007137 | E-mail: save@bt-laboratory.com | www.bt-laboratory.com