

Septin 8 Polyclonal Antibody

Description

Product type	Primary Antibody
Code	BT-AP08224
Host	Rabbit
Isotype	IgG
Size	20ul, 50ul, 100ul
Immunogen	The antiserum was produced against synthesized peptide derived from human SEPT8. AA range:170-219
Mol wt	55756
Species reactivity	Human, Mouse, Rat
Clonality	Polyclonal
Recommended application	WB, ELISA
Concentration	1 mg/ml
Full name	Septin 8 Antibody
Synonyms	SEPT8; KIAA0202; Septin-8

This product is for research use only, not for use in human, therapeutic or diagnostic procedure.

Background

SEPT8 is a member of the septin family of nucleotide binding proteins, originally described in yeast as cell division cycle regulatory proteins. Septins are highly conserved in yeast, Drosophila, and mouse, and appear to regulate cytoskeletal organization. Disruption of septin function disturbs cytokinesis and results in large multinucleate or polyploid cells. Multiple alternatively spliced transcript variants encoding different isoforms have been found for this gene.

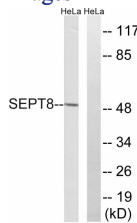
Recommended Dilution

WB: 1: 500 - 1: 2000

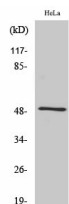
ELISA: 1: 10000

Not yet tested in other applications.

Images



Western blot analysis of lysates from HeLa cells, using SEPT8 Antibody. The lane on the right is blocked with the synthesized peptide.



Western Blot analysis of various cells using Septin 8 Polyclonal Antibody diluted at 1:2000

Storage

-20°C for one year

501 Changsheng S Rd, Nanhu Dist, Jiaxing, Zhejiang, China

Tel: 86 21 31007137 | E-mail: save@bt-laboratory.com | www.bt-laboratory.com