

## SERGEF Polyclonal Antibody

### Description

<b>Product type</b>	Primary Antibody
<b>Code</b>	BT-AP08227
<b>Host</b>	Rabbit
<b>Isotype</b>	IgG
<b>Size</b>	20ul, 50ul, 100ul
<b>Immunogen</b>	The antiserum was produced against synthesized peptide derived from human SERGEF. AA range:179-228
<b>Mol wt</b>	48981
<b>Species reactivity</b>	Human
<b>Clonality</b>	Polyclonal
<b>Recommended application</b>	WB, ELISA
<b>Concentration</b>	1 mg/ml
<b>Full name</b>	SERGEF Antibody
<b>Synonyms</b>	SERGEF; DELGEF; GNEFR; Secretion-regulating guanine nucleotide exchange factor; Deafness locus-associated putative guanine nucleotide exchange factor; DelGEF; Guanine nucleotide exchange factor-relate

**This product is for research use only, not for use in human, therapeutic or diagnostic procedure.**

### Background

SERGEF (Secretion Regulating Guanine Nucleotide Exchange Factor) is a Protein Coding gene. GO annotations related to this gene include Ran guanyl-nucleotide exchange factor activity. An important paralog of this gene is WBSR16. robable guanine nucleotide exchange factor (GEF), which may be involved in the secretion process.

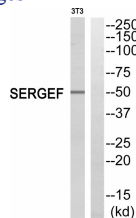
### Recommended Dilution

WB: 1: 500 - 1: 2000

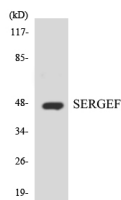
ELISA: 1: 20000

Not yet tested in other applications.

### Images



Western blot analysis of SERGEF Antibody. The lane on the right is blocked with the SERGEF peptide.



Western blot analysis of the lysates from HT-29 cells using SERGEF antibody.

## Storage

-20°C for one year

501 Changsheng S Rd, Nanhu Dist, Jiaxing, Zhejiang, China

Tel: 86 21 31007137 | E-mail: [save@bt-laboratory.com](mailto:save@bt-laboratory.com) | [www.bt-laboratory.com](http://www.bt-laboratory.com)