

Serinc1 Polyclonal Antibody

Description

Product type	Primary Antibody
Code	BT-AP08228
Host	Rabbit
Isotype	IgG
Size	20ul, 50ul, 100ul
Immunogen	The antiserum was produced against synthesized peptide derived from human SERC1. AA range:381-430
Mol wt	50495
Species reactivity	Human, Mouse, Rat
Clonality	Polyclonal
Recommended application	WB, IHC-p, IF, ELISA
Concentration	1 mg/ml
Full name	Serinc1 Antibody
Synonyms	SERINC1; KIAA1253; TDE1L; TDE2; Serine incorporator 1; Tumor differentially expressed protein 1-like; Tumor differentially expressed protein 2

This product is for research use only, not for use in human, therapeutic or diagnostic procedure.

Background

Enhances the incorporation of serine into phosphatidylserine and sphingolipids.

Recommended Dilution

WB: 1: 500 - 1: 2000

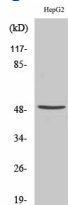
IHC: 1: 100 - 1: 300

IF: 1: 200 - 1: 1000

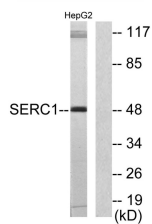
ELISA: 1: 20000

Not yet tested in other applications.

Images



Western Blot analysis of various cells using Serinc1 Polyclonal Antibody



Western blot analysis of lysates from HepG2 cells, using SERC1 Antibody. The lane on the right is blocked with the synthesized peptide.

Storage

-20°C for one year

501 Changsheng S Rd, Nanhu Dist, Jiaxing, Zhejiang, China

Tel: 86 21 31007137 | E-mail: save@bt-laboratory.com | www.bt-laboratory.com