

## Serpin A11 Polyclonal Antibody

### Description

<b>Product type</b>	Primary Antibody
<b>Code</b>	BT-AP08231
<b>Host</b>	Rabbit
<b>Isotype</b>	IgG
<b>Size</b>	20ul, 50ul, 100ul
<b>Immunogen</b>	The antiserum was produced against synthesized peptide derived from human SERPINA11. AA range:191-240
<b>Mol wt</b>	46898
<b>Species reactivity</b>	Human
<b>Clonality</b>	Polyclonal
<b>Recommended application</b>	WB, ELISA
<b>Concentration</b>	1 mg/ml
<b>Full name</b>	Serpin A11 Antibody
<b>Synonyms</b>	SERPINA11; Serpin A11

This product is for research use only, not for use in human, therapeutic or diagnostic procedure.

### Background

SERPINA11 (Serpin Family A Member 11) is a Protein Coding gene. GO annotations related to this gene include serine-type endopeptidase inhibitor activity. An important paralog of this gene is SERPINA12.

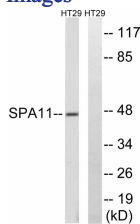
### Recommended Dilution

WB: 1: 500 - 1: 2000

ELISA: 1: 40000

Not yet tested in other applications.

### Images



Western blot analysis of lysates from HT-29 cells, using SERPINA11 Antibody. The lane on the right is blocked with the synthesized peptide.

### Storage

-20°C for one year