

Serpin B12 Polyclonal Antibody

Description

Product type	Primary Antibody
Code	BT-AP08232
Host	Rabbit
Isotype	IgG
Size	20ul, 50ul, 100ul
Immunogen	The antiserum was produced against synthesized peptide derived from human SERPINB12. AA range:241-290
Mol wt	46276
Species reactivity	Human
Clonality	Polyclonal
Recommended application	WB, ELISA
Concentration	1 mg/ml
Full name	Serpin B12 Antibody
Synonyms	SERPINB12; Serpin B12

This product is for research use only, not for use in human, therapeutic or diagnostic procedure.

Background

Inhibits trypsin and plasmin, but not thrombin, coagulation factor Xa, or urokinase-type plasminogen activator.

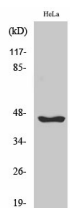
Recommended Dilution

WB: 1: 500 - 1: 2000

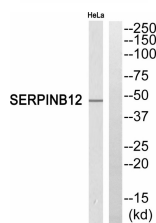
ELISA: 1: 10000

Not yet tested in other applications.

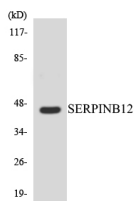
Images



Western Blot analysis of various cells using Serpin B12 Polyclonal Antibody



Western blot analysis of SERPINB12 Antibody. The lane on the right is blocked with the SERPINB12 peptide.



Western blot analysis of the lysates from HeLa cells using SERPINB12 antibody.

Storage

-20°C for one year

501 Changsheng S Rd, Nanhu Dist, Jiaxing, Zhejiang, China

Tel: 86 21 31007137 | E-mail: save@bt-laboratory.com | www.bt-laboratory.com