

Tuberin(Phospho Thr1462) Polyclonal Antibody

Description

Product type	Primary Antibody
Code	BT-AP08238
Host	Rabbit
Isotype	IgG
Size	20ul, 50ul, 100ul
Immunogen	The antiserum was produced against synthesized peptide derived from human Tuberin/TSC2 around the phosphorylation site of Thr1462. AA range:1428-1477
Mol wt	200749
Species reactivity	Human, Mouse, Rat
Clonality	Polyclonal
Recommended application	WB, IHC-p, IF, ICC, ELISA
Concentration	1 mg/ml
Full name	Tuberin
Synonyms	Tuberin; TSC2; TSC4; Tuberin; Tuberous sclerosis 2 protein

This product is for research use only, not for use in human, therapeutic or diagnostic procedure.

Background

Mutations in this gene lead to tuberous sclerosis complex. Its gene product is believed to be a tumor suppressor and is able to stimulate specific GTPases. The protein associates with hamartin in a cytosolic complex| possibly acting as a chaperone for hamartin. Alternative splicing results in multiple transcript variants encoding different isoforms.

Recommended Dilution

IHC-p: 1: 100 - 1: 300

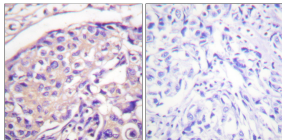
IF: 1: 200 - 1: 1000

ICC: 1: 200 - 1: 1000

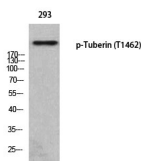
ELISA: 1: 5000

Not yet tested in other applications.

Images



Immunohistochemistry analysis of paraffin-embedded human breast carcinoma, using Tuberin/TSC2 (Phospho-Thr1462) Antibody. The picture on the right is blocked with the phospho peptide.



Western blot analysis of 293 using p-Tuberin (T1462) antibody.

Storage

-20°C for 1 year

501 Changsheng S Rd, Nanhu Dist, Jiaxing, Zhejiang, China

Tel: 86 21 31007137 | E-mail: save@bt-laboratory.com | www.bt-laboratory.com