

SFRS14 Polyclonal Antibody

Description

Product type	Primary Antibody
Code	BT-AP08245
Host	Rabbit
Isotype	IgG
Size	20ul, 50ul, 100ul
Immunogen	Synthesized peptide derived from SFRS14 . at AA range: 260-340
Mol wt	120237
Species reactivity	Human
Clonality	Polyclonal
Recommended application	WB, ELISA
Concentration	1 mg/ml
Full name	SFRS14 Antibody
Synonyms	SUGP2; KIAA0365; SFRS14; SURP and G-patch domain-containing protein 2; Arginine/serine-rich-splicing factor 14; Splicing factor; arginine/serine-rich 14

This product is for research use only, not for use in human, therapeutic or diagnostic procedure.

Background

SUGP2 encodes a member of the arginine/serine-rich family of splicing factors. The encoded protein functions in mRNA processing. Alternatively spliced transcript variants have been described.

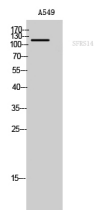
Recommended Dilution

WB: 1: 500 - 1: 2000

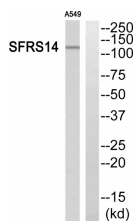
ELISA: 1: 5000

Not yet tested in other applications.

Images



Western Blot analysis of A549 cells using SFRS14 Polyclonal Antibody cells nucleus.



Western blot analysis of SFRS14 Antibody. The lane on the right is blocked with the SFRS14 peptide.

Storage

-20°C for one year

