

SFRS15 Polyclonal Antibody

Description

Product type	Primary Antibody
Code	BT-AP08246
Host	Rabbit
Isotype	IgG
Size	20ul, 50ul, 100ul
Immunogen	The antiserum was produced against synthesized peptide derived from human SFRS15. AA range:601-650
Mol wt	125869
Species reactivity	Human, Mouse, Rat
Clonality	Polyclonal
Recommended application	WB, IHC-p, ELISA
Concentration	1 mg/ml
Full name	SFRS15 Antibody
Synonyms	SCAF4; KIAA1172; SFRS15; Splicing factor; arginine/serine-rich 15; CTD-binding SR-like protein RA4; SR-related and CTD-associated factor 4

This product is for research use only, not for use in human, therapeutic or diagnostic procedure.

Background

SCAF4 (SR-related CTD associated factor 4) likely encodes a member of the arginine/serine-rich splicing factor family. A similar protein in Rat appears to bind the large subunit of RNA polymerase II and provide a link between transcription and pre-mRNA splicing. Alternatively spliced transcript variants have been described.

Recommended Dilution

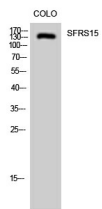
WB: 1: 500 - 1: 2000

IHC: 1: 100 - 1: 300

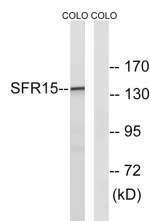
ELISA: 1: 40000

Not yet tested in other applications.

Images



Western Blot analysis of COLO cells using SFRS15 Polyclonal Antibody diluted at 1:2000 cells nucleus.



Western blot analysis of lysates from COLO cells, using SFRS15 Antibody. The lane on the right is blocked with the synthesized peptide.

Storage

-20°C for one year

501 Changsheng S Rd, Nanhu Dist, Jiaxing, Zhejiang, China

Tel: 86 21 31007137 | E-mail: save@bt-laboratory.com | www.bt-laboratory.com