

SFT2D2 Polyclonal Antibody

Description

Product type	Primary Antibody
Code	BT-AP08248
Host	Rabbit
Isotype	IgG
Size	20ul, 50ul, 100ul
Immunogen	The antiserum was produced against synthesized peptide derived from human SFT2B. AA range:61-110
Mol wt	17779
Species reactivity	Human, Mouse, Rat
Clonality	Polyclonal
Recommended application	WB, ELISA
Concentration	1 mg/ml
Full name	SFT2D2 Antibody
Synonyms	SFT2D2; Vesicle transport protein SFT2B; SFT2 domain-containing protein 2

This product is for research use only, not for use in human, therapeutic or diagnostic procedure.

Background

SFT2D2 (SFT2 Domain Containing 2) is a Protein Coding gene. An important paralog of this gene is SFT2D1.

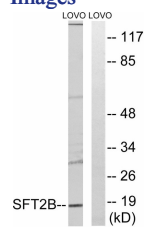
Recommended Dilution

WB: 1: 500 - 1: 2000

ELISA: 1: 40000

Not yet tested in other applications.

Images



Western blot analysis of lysates from LOVO cells, using SFT2B Antibody. The lane on the right is blocked with the synthesized peptide.

Storage

-20°C for one year

501 Changsheng S Rd, Nanhu Dist, Jiaxing, Zhejiang, China

Tel: 86 21 31007137 | E-mail: save@bt-laboratory.com | www.bt-laboratory.com