

Sg III Polyclonal Antibody

Description

Product type	Primary Antibody
Code	BT-AP08252
Host	Rabbit
Isotype	IgG
Size	20ul, 50ul, 100ul
Immunogen	The antiserum was produced against synthesized peptide derived from the N-terminal region of human SCG3. AA range:21-70
Mol wt	53005
Species reactivity	Human, Rat
Clonality	Polyclonal
Recommended application	WB, IHC-p, ELISA
Concentration	1 mg/ml
Full name	Sg III Antibody
Synonyms	SCG3; Secretogranin-3; Secretogranin III; SgIII

This product is for research use only, not for use in human, therapeutic or diagnostic procedure.

Background

Secretogranin-3 encoded by SCG3 is a member of the chromogranin/secretogranin family of neuroendocrine secretory proteins. Granins may serve as precursors for biologically active peptides. Some granins have been shown to function as helper proteins in sorting and proteolytic processing of prohormones; however, the function of this protein is unknown. Two transcript variants encoding different isoforms have been found for this gene.

Recommended Dilution

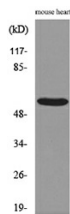
WB: 1: 500 - 1: 2000

IHC-p: 1: 100 - 300

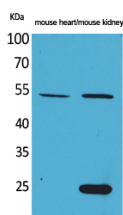
ELISA: 1: 20000

Not yet tested in other applications.

Images

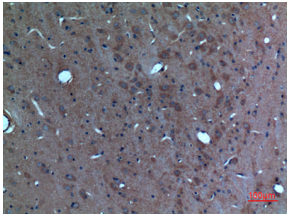


Western blot analysis of lysate from mouse heart cells, using SCG3 Antibody.

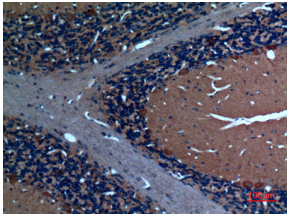


Western Blot analysis of mouse heart, mouse kidney cells using Sg III Polyclonal Antibody.

Secondary antibody was diluted at 1:20000



Immunohistochemical analysis of paraffin-embedded rat-brain, antibody was diluted at 1:100



Immunohistochemical analysis of paraffin-embedded rat-brain, antibody was diluted at 1:100

Storage

-20°C for one year

501 Changsheng S Rd, Nanhu Dist, Jiaxing, Zhejiang, China

Tel: 86 21 31007137 | E-mail: save@bt-laboratory.com | www.bt-laboratory.com