

## SGK1 Polyclonal Antibody

### Description

Product type	Primary Antibody
Code	BT-AP08257
Host	Rabbit
Isotype	IgG
Size	20ul, 50ul, 100ul
Immunogen	The antiserum was produced against synthesized peptide derived from human SGK. AA range:41-90
Mol wt	48942
Species reactivity	Human, Mouse, Rat
Clonality	Polyclonal
Recommended application	WB, IHC-p, IF, ELISA
Concentration	1 mg/ml
Full name	SGK1 Antibody
Synonyms	SGK1; SGK; Serine/threonine-protein kinase Sgk1; Serum/glucocorticoid-regulated kinase 1

**This product is for research use only, not for use in human, therapeutic or diagnostic procedure.**

### Background

SGK1 encodes a serine/threonine-protein kinase Sgk1 kinase that plays an important role in cellular stress response. This kinase activates certain potassium, sodium, and chloride channels, suggesting an involvement in the regulation of processes such as cell survival, neuronal excitability, and renal sodium excretion. High levels of expression of this gene may contribute to conditions such as hypertension and diabetic nephropathy. Several alternatively spliced transcript variants encoding different isoforms have been noted for this gene.

### Recommended Dilution

WB: 1: 500 - 1: 2000

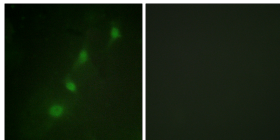
IHC: 1: 100 - 1: 300

IF: 1: 200 - 1: 1000

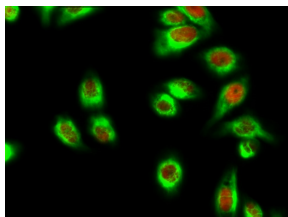
ELISA: 1: 5000

Not yet tested in other applications.

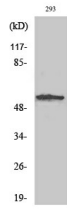
### Images



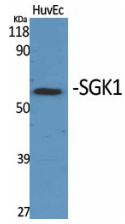
Immunofluorescence analysis of HeLa cells, using SGK Antibody. The picture on the right is blocked with the synthesized peptide.



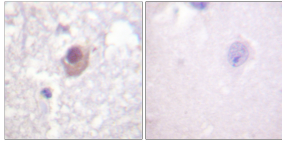
Immunofluorescence analysis of HeLa cell. 1,SGK1 Polyclonal Antibody(red) was diluted at 1:200(4° overnight). HA01 Monoclonal Antibody(Mix)(green) was diluted at 1:200(4° overnight). 2, Goat Anti Rabbit Alexa Fluor 594 was diluted at 1:1000(room temperature, 50min). Goat Anti Mouse Alexa Fluor 488 was diluted at 1:1000(room temperature, 50min).



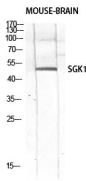
Western Blot analysis of 293 cells using SGK1 Polyclonal Antibody diluted at 1:2000



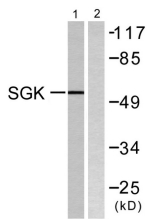
Western Blot analysis of various cells using SGK1 Polyclonal Antibody diluted at 1:2000



Immunohistochemistry analysis of paraffin-embedded human brain tissue, using SGK Antibody. The picture on the right is blocked with the synthesized peptide.



Western Blot analysis of RAW using SGK1 Polyclonal Antibody diluted at 1:2000



Western blot analysis of lysates from 293 cells, treated with heat shock, using SGK Antibody. The lane on the right is blocked with the synthesized peptide.

### Storage

-20°C for one year

501 Changsheng S Rd, Nanhu Dist, Jiaxing, Zhejiang, China

Tel: 86 21 31007137 | E-mail: [save@bt-laboratory.com](mailto:save@bt-laboratory.com) | [www.bt-laboratory.com](http://www.bt-laboratory.com)