

## SgK288 Polyclonal Antibody

### Description

<b>Product type</b>	Primary Antibody
<b>Code</b>	BT-AP08261
<b>Host</b>	Rabbit
<b>Isotype</b>	IgG
<b>Size</b>	20ul, 50ul, 100ul
<b>Immunogen</b>	The antiserum was produced against synthesized peptide derived from human ANKK1. AA range:321-370
<b>Mol wt</b>	84632
<b>Species reactivity</b>	Human
<b>Clonality</b>	Polyclonal
<b>Recommended application</b>	WB, ELISA
<b>Concentration</b>	1 mg/ml
<b>Full name</b>	SgK288 Antibody
<b>Synonyms</b>	ANKK1; PKK2; SGK288; Ankyrin repeat and protein kinase domain-containing protein 1; Protein kinase PKK2; Sugen kinase 288; SgK288; X-kinase

**This product is for research use only, not for use in human, therapeutic or diagnostic procedure.**

### Background

Ankyrin repeat and protein kinase domain-containing protein 1 encoded by ANKK1 belongs to the Ser/Thr protein kinase family, and protein kinase superfamily involved in signal transduction pathways. This gene is closely linked to DRD2 gene (GeneID: 1813) on chr 11, and a well studied restriction fragment length polymorphism (RFLP) designated Taq1A, was originally associated with the DRD2 gene, however, later was determined to be located in exon 8 of ANKK1 gene (PMIDs: 18621654, 15146457), where it causes a nonconservative amino acid substitution. It is not clear if this gene plays any role in neuropsychiatric disorders previously associated with Taq1A RFLP.

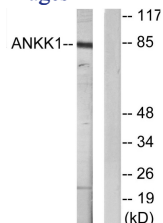
### Recommended Dilution

WB: 1: 500 - 1: 2000

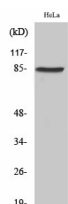
ELISA: 1: 20000

Not yet tested in other applications.

### Images



Western blot analysis of lysates from HeLa cells, using ANKK1 Antibody. The lane on the right is blocked with the synthesized peptide.



Western Blot analysis of various cells using SgK288 Polyclonal Antibody

## Storage

-20°C for one year

501 Changsheng S Rd, Nanhu Dist, Jiaxing, Zhejiang, China

Tel: 86 21 31007137 | E-mail: [save@bt-laboratory.com](mailto:save@bt-laboratory.com) | [www.bt-laboratory.com](http://www.bt-laboratory.com)