

SGLT-1 Polyclonal Antibody

Description

Product type	Primary Antibody
Code	BT-AP08263
Host	Rabbit
Isotype	IgG
Size	20ul, 50ul, 100ul
Immunogen	The antiserum was produced against synthesized peptide derived from human SGLT-1. AA range:525-574
Mol wt	73498
Species reactivity	Human, Mouse, Rat
Clonality	Polyclonal
Recommended application	WB, ELISA
Concentration	1 mg/ml
Full name	SGLT-1 Antibody
Synonyms	SLC5A1; NAGT; SGLT1; Sodium/glucose cotransporter 1; Na(+)/glucose cotransporter 1; High affinity sodium-glucose cotransporter; Solute carrier family 5 member 1

This product is for research use only, not for use in human, therapeutic or diagnostic procedure.

Background

SLC5A1 (solute carrier family 5 member 1) encodes a member of the sodium-dependent glucose transporter (SGLT) family. The encoded integral membrane protein is the primary mediator of dietary glucose and galactose uptake from the intestinal lumen. Mutations in SLC5A1 have been associated with glucose-galactose malabsorption. Multiple transcript variants encoding different isoforms have been found for SLC5A1.

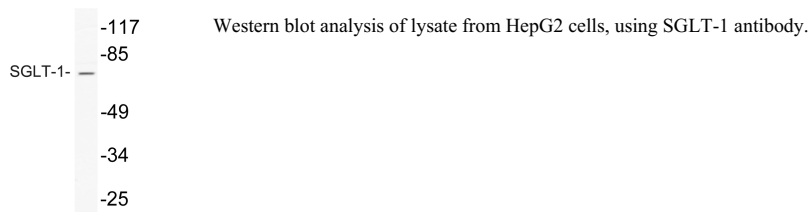
Recommended Dilution

WB: 1: 500 - 1: 2000

ELISA: 1: 10000

Not yet tested in other applications.

Images



Storage

-20°C for one year