

SGLT-2 Polyclonal Antibody

Description

Product type	Primary Antibody
Code	BT-AP08264
Host	Rabbit
Isotype	IgG
Size	20ul, 50ul, 100ul
Immunogen	The antiserum was produced against synthesized peptide derived from human SLC5A2. AA range:101-150
Mol wt	72897
Species reactivity	Human, Mouse, Rat
Clonality	Polyclonal
Recommended application	WB, ELISA
Concentration	1 mg/ml
Full name	SGLT-2 Antibody
Synonyms	SLC5A2; SGLT2; Sodium/glucose cotransporter 2; Na(+)/glucose cotransporter 2; Low affinity sodium-glucose cotransporter; Solute carrier family 5 member 2

This product is for research use only, not for use in human, therapeutic or diagnostic procedure.

Background

SLC5A2 (solute carrier family 5 member 2) encodes a member of the sodium glucose cotransporter family which are sodium-dependent glucose transport proteins. The encoded protein is the major cotransporter involved in glucose reabsorption in the kidney. Mutations in SLC5A2 are associated with renal glucosuria. Two transcript variants, one protein-coding and one not, have been found for SLC5A2.

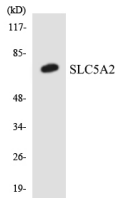
Recommended Dilution

WB: 1: 500 - 1: 2000

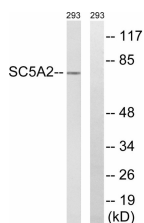
ELISA: 1: 40000

Not yet tested in other applications.

Images



Western blot analysis of the lysates from Jurkat cells using SLC5A2 antibody.



Western blot analysis of lysates from 293 cells, using SLC5A2 Antibody. The lane on the right is blocked with the synthesized peptide.

Storage

-20°C for one year

501 Changsheng S Rd, Nanhu Dist, Jiaxing, Zhejiang, China

Tel: 86 21 31007137 | E-mail: save@bt-laboratory.com | www.bt-laboratory.com