

SH2D5 Polyclonal Antibody

Description

Product type	Primary Antibody
Code	BT-AP08273
Host	Rabbit
Isotype	IgG
Size	20ul, 50ul, 100ul
Immunogen	The antiserum was produced against synthesized peptide derived from human SH2D5. AA range:281-330
Mol wt	37439
Species reactivity	Human, Mouse, Rat
Clonality	Polyclonal
Recommended application	WB, ELISA
Concentration	1 mg/ml
Full name	SH2D5 Antibody
Synonyms	SH2D5; SH2 domain-containing protein 5

This product is for research use only, not for use in human, therapeutic or diagnostic procedure.

Background

SH2D5 (SH2 Domain Containing 5) is a Protein Coding gene. May be involved in synaptic plasticity regulation through the control of Rac-GTP levels.

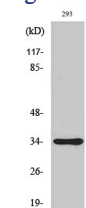
Recommended Dilution

WB: 1: 500 - 1: 2000

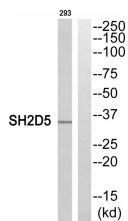
ELISA: 1: 20000

Not yet tested in other applications.

Images



Western Blot analysis of various cells using SH2D5 Polyclonal Antibody



Western blot analysis of SH2D5 Antibody. The lane on the right is blocked with the SH2D5 peptide.

Storage

-20°C for one year