

VEGFR2 Polyclonal Antibody

Description

Product type	Primary Antibody
Code	BT-AP08279
Host	Rabbit
Isotype	IgG
Size	20ul, 50ul, 100ul
Immunogen	Synthetic peptide from human protein at AA range: 1268-1341
Mol wt	N/A
Species reactivity	Human, Rat, Mouse
Clonality	Polyclonal
Recommended application	WB, IHC-p, IF, ELISA
Concentration	1 mg/ml
Full name	VEGFR2
Synonyms	VEGFR2; Vascular endothelial growth factor receptor 2; VEGFR-2; EC 2.7.10.1; Fetal liver kinase 1; FLK-1; Kinase insert domain receptor; KDR; Protein-tyrosine kinase receptor flk-1; CD antigen CD309)

This product is for research use only, not for use in human, therapeutic or diagnostic procedure.

Background

Vascular endothelial growth factor (VEGF) is a major growth factor for endothelial cells. This gene encodes one of the two receptors of the VEGF. This receptor| known as kinase insert domain receptor| is a type III receptor tyrosine kinase. It functions as the main mediator of VEGF-induced endothelial proliferation| survival| migration| tubular morphogenesis and sprouting. The signalling and trafficking of this receptor are regulated by multiple factors| including Rab GTPase| P2Y purine nucleotide receptor| integrin alphaVbeta3| T-cell protein tyrosine phosphatase| etc.. Mutations of this gene are implicated in infantile capillary hemangiomas.

Recommended Dilution

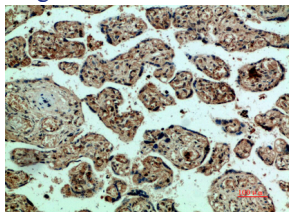
WB: 1: 500 - 1: 2000

IHC-p/f: 1: 50 - 1: 300

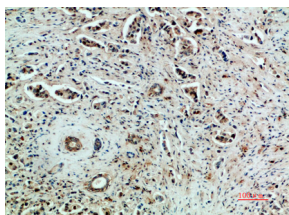
ELISA: 1: 10000 - 1: 20000

Not yet tested in other applications.

Images



Immunohistochemical analysis of paraffin-embedded human-breast-cancer, antibody was diluted at 1:200



Immunohistochemical analysis of paraffin-embedded human-placenta, antibody was diluted at 1:200

Storage

-20°C for 1 year

501 Changsheng S Rd, Nanhu Dist, Jiaxing, Zhejiang, China

Tel: 86 21 31007137 | E-mail: save@bt-laboratory.com | www.bt-laboratory.com