

Vimentin(Phospho-Tyr38) Polyclonal Antibody

Description

Product type	Primary Antibody
Code	BT-AP08280
Host	Rabbit
Isotype	IgG
Size	20ul, 50ul, 100ul
Immunogen	Synthesized phospho-peptide around the phosphorylation site of human Vimentin (Phospho-Tyr38)
Mol wt	51260
Species reactivity	Human, Mouse, Rat
Clonality	Polyclonal
Recommended application	WB, ELISA
Concentration	1 mg/ml
Full name	vimentin
Synonyms	vimentin; VIM

This product is for research use only, not for use in human, therapeutic or diagnostic procedure.

Background

This gene encodes a member of the intermediate filament family. Intermediate filaments along with microtubules and actin microfilaments make up the cytoskeleton. The protein encoded by this gene is responsible for maintaining cell shape integrity of the cytoplasm and stabilizing cytoskeletal interactions. It is also involved in the immune response and controls the transport of low-density lipoprotein (LDL)-derived cholesterol from a lysosome to the site of esterification. It functions as an organizer of a number of critical proteins involved in attachment migration and cell signaling. Mutations in this gene causes a dominant pulverulent cataract.

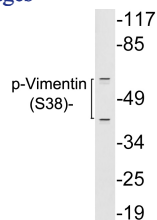
Recommended Dilution

WB: 1: 500 - 10000

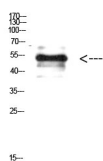
ELISA: 1: 10000

Not yet tested in other applications.

Images



Western Blot analysis of HELA cells using Antibody diluted at 500. Secondary antibody was diluted at 1:20000



Western blot analysis of lysates from 293 cells treated with paclitaxel, using p-Vimentin (Phospho-Ser38) antibody.

Storage

-20°C for 1 year

501 Changsheng S Rd, Nanhu Dist, Jiaxing, Zhejiang, China

Tel: 86 21 31007137 | E-mail: save@bt-laboratory.com | www.bt-laboratory.com