

SH3TC1 Polyclonal Antibody

Description

| | |
|-------------------------|--|
| Product type | Primary Antibody |
| Code | BT-AP08282 |
| Host | Rabbit |
| Isotype | IgG |
| Size | 20ul, 50ul, 100ul |
| Immunogen | The antiserum was produced against synthesized peptide derived from human SH3TC1. AA range:391-440 |
| Mol wt | 146929 |
| Species reactivity | Human |
| Clonality | Polyclonal |
| Recommended application | WB, ELISA |
| Concentration | 1 mg/ml |
| Full name | SH3TC1 Antibody |
| Synonyms | SH3TC1; SH3 domain and tetratricopeptide repeat-containing protein 1 |

This product is for research use only, not for use in human, therapeutic or diagnostic procedure.

Background

SH3TC1 (SH3 Domain And Tetratricopeptide Repeats 1) is a Protein Coding gene. An important paralog of this gene is SH3TC2.

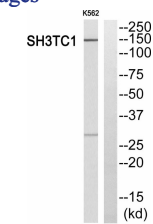
Recommended Dilution

WB: 1: 500 - 1: 2000

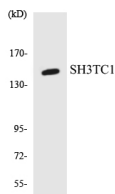
ELISA: 1: 10000

Not yet tested in other applications.

Images



Western blot analysis of SH3TC1 Antibody. The lane on the right is blocked with the SH3TC1 peptide.



Western blot analysis of the lysates from RAW264.7 cells using SH3TC1 antibody.

Storage

-20°C for one year