

## CP062 Rabbit Polyclonal Antibody

### Description

<b>Product type</b>	Primary Antibody
<b>Code</b>	BT-AP08288
<b>Host</b>	Rabbit
<b>Isotype</b>	IgG
<b>Size</b>	20ul, 50ul, 100ul
<b>Immunogen</b>	Synthesized peptide derived from human CP062
<b>Mol wt</b>	N/A
<b>Species reactivity</b>	Human, Mouse, Rat
<b>Clonality</b>	Polyclonal
<b>Recommended application</b>	WB
<b>Concentration</b>	1 mg/ml
<b>Full name</b>	CP062
<b>Synonyms</b>	CP062; UPF0505 protein C16orf62; Esophageal cancer-associated protein)

This product is for research use only, not for use in human, therapeutic or diagnostic procedure.

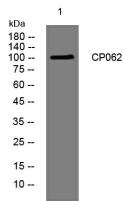
### Background

#### Recommended Dilution

WB: 1: 500 - 1: 2000

Not yet tested in other applications.

### Images



### Storage

-20°C for 1 year

501 Changsheng S Rd, Nanhu Dist, Jiaxing, Zhejiang, China

Tel: 86 21 31007137 | E-mail: [save@bt-laboratory.com](mailto:save@bt-laboratory.com) | [www.bt-laboratory.com](http://www.bt-laboratory.com)