

CP089 Rabbit Polyclonal Antibody

Description

Product type	Primary Antibody
Code	BT-AP08298
Host	Rabbit
Isotype	IgG
Size	20ul, 50ul, 100ul
Immunogen	Synthesized peptide derived from human CP089
Mol wt	44220
Species reactivity	Human, Mouse
Clonality	Polyclonal
Recommended application	WB
Concentration	1 mg/ml
Full name	CP089
Synonyms	CP089

This product is for research use only, not for use in human, therapeutic or diagnostic procedure.

Background

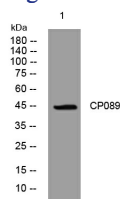
This gene is expressed predominantly in the thyroid. Based on expression patterns similar to thyroid transcription factors and proteins| this gene may function in the development and function of the thyroid. Multiple transcript variants encoding different isoforms have been found for this gene.

Recommended Dilution

WB: 1: 500 - 1: 2000

Not yet tested in other applications.

Images



Western blot analysis of lysates from HpeG2 cells, primary antibody was diluted at 1:1000, 4°C overnight

Storage

-20°C for 1 year

501 Changsheng S Rd, Nanhu Dist, Jiaxing, Zhejiang, China

Tel: 86 21 31007137 | E-mail: save@bt-laboratory.com | www.bt-laboratory.com