

Sideroflexin-4 Polyclonal Antibody

Description

Product type	Primary Antibody
Code	BT-AP08308
Host	Rabbit
Isotype	IgG
Size	20ul, 50ul, 100ul
Immunogen	The antiserum was produced against synthesized peptide derived from human SFXN4. AA range:1-50
Mol wt	37998
Species reactivity	Human
Clonality	Polyclonal
Recommended application	WB, IF, ELISA
Concentration	1 mg/ml
Full name	Sideroflexin-4 Antibody
Synonyms	SFXN4; BCM1; Sideroflexin-4; Breast cancer resistance marker 1

This product is for research use only, not for use in human, therapeutic or diagnostic procedure.

Background

SFXN4 encodes a member of the sideroflexin family. The sideroflexin-4 is a transmembrane protein of the inner mitochondrial membrane, and is required for mitochondrial respiratory homeostasis and erythropoiesis. Mutations in this gene are associated with mitochondriopathy and macrocytic anemia. Alternatively spliced transcript variants have been found in this gene.

Recommended Dilution

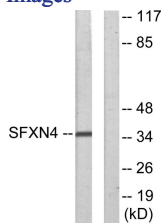
WB: 1: 500 - 1: 2000

IF: 1: 200 - 1: 1000

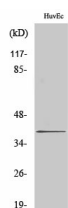
ELISA: 1: 20000

Not yet tested in other applications.

Images



Western blot analysis of lysates from HUVEC cells, using SFXN4 Antibody. The lane on the right is blocked with the synthesized peptide.



Western Blot analysis of various cells using Sideroflexin-4 Polyclonal Antibody

Storage

-20°C for one year

501 Changsheng S Rd, Nanhu Dist, Jiaxing, Zhejiang, China

Tel: 86 21 31007137 | E-mail: save@bt-laboratory.com | www.bt-laboratory.com