

CYP4Z1/2 Polyclonal Antibody

Description

Product type	Primary Antibody
Code	BT-AP08309
Host	Rabbit
Isotype	IgG
Size	20ul, 50ul, 100ul
Immunogen	Synthesized peptide derived from the Internal region of human CYP4Z1/2.
Mol wt	59086;40159
Species reactivity	Human, Rat, Mouse
Clonality	Polyclonal
Recommended application	WB, IHC-p, IF, ELISA
Concentration	1 mg/ml
Full name	Cytochrome P450 4Z1/Putative cytochrome P450 family member 4Z2
Synonyms	Cytochrome P450 4Z1/Putative cytochrome P450 family member 4Z2

This product is for research use only, not for use in human, therapeutic or diagnostic procedure.

Background

Catalytic activity: $\text{RH} + \text{reduced flavoprotein} + \text{O}_2 = \text{ROH} + \text{oxidized flavoprotein} + \text{H}_2\text{O}$., cofactor: Heme group., Belongs to the cytochrome P450 family., tissue specificity: Preferentially detected in breast carcinoma tissue and mammary gland, whereas only marginal expression is found in all other tested tissues.,

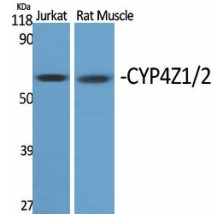
Recommended Dilution

IHC-p: 1: 100 - 1: 300

ELISA: 1: 40000

Not yet tested in other applications.

Images



Western Blot analysis of various cells using CYP4Z1/2 Polyclonal Antibody

Storage

-20°C for 1 year