

Sin3B Polyclonal Antibody

Description

Product type	Primary Antibody
Code	BT-AP08319
Host	Rabbit
Isotype	IgG
Size	20ul, 50ul, 100ul
Immunogen	The antiserum was produced against synthesized peptide derived from human SIN3B. AA range:221-270
Mol wt	133066
Species reactivity	Human
Clonality	Polyclonal
Recommended application	WB, IF, ELISA
Concentration	1 mg/ml
Full name	Sin3B Antibody
Synonyms	SIN3B; KIAA0700; Paired amphipathic helix protein Sin3b; Histone deacetylase complex subunit Sin3b; Transcriptional corepressor Sin3b

This product is for research use only, not for use in human, therapeutic or diagnostic procedure.

Background

SIN3B (SIN3 Transcription Regulator Family Member B) is a Protein Coding gene. Paired amphipathic helix protein Sin3b acts as a transcriptional repressor. Interacts with MXI1 to repress MYC responsive genes and antagonize MYC oncogenic activities. Interacts with MAD-MAX heterodimers by binding to MAD. The heterodimer then represses transcription by tethering SIN3B to DNA. Also forms a complex with FOXK1 which represses transcription. Among its related pathways are Gene Expression and Metabolism. Gene Ontology (GO) annotations related to this gene include chromatin binding and RNA polymerase II transcription corepressor activity. An important paralog of this gene is SIN3A.

Recommended Dilution

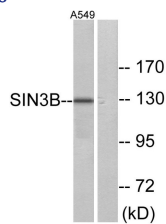
WB: 1: 500 - 1: 2000

IF: 1: 200 - 1: 1000

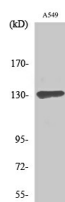
ELISA: 1: 10000

Not yet tested in other applications.

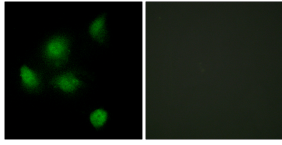
Images



Western blot analysis of lysates from A549 cells, using SIN3B Antibody. The lane on the right is blocked with the synthesized peptide.



Western Blot analysis of various cells using Sin3B Polyclonal Antibody



Immunofluorescence analysis of HeLa cells, using SIN3B Antibody. The picture on the right is blocked with the synthesized peptide.

Storage

-20°C for one year

501 Changsheng S Rd, Nanhu Dist, Jiaxing, Zhejiang, China

Tel: 86 21 31007137 | E-mail: save@bt-laboratory.com | www.bt-laboratory.com