

SIP1 Polyclonal Antibody

Description

Product type	Primary Antibody
Code	BT-AP08320
Host	Rabbit
Isotype	IgG
Size	20ul, 50ul, 100ul
Immunogen	The antiserum was produced against synthesized peptide derived from human ZEB2. AA range:71-120
Mol wt	136447
Species reactivity	Human, Mouse, Rat
Clonality	Polyclonal
Recommended application	WB, IHC-p, ELISA
Concentration	1 mg/ml
Full name	SIP1 Antibody
Synonyms	ZEB2; KIAA0569; SIP1; ZFHX1B; ZFX1B; HRIHFB2411; Zinc finger E-box-binding homeobox 2; Smad-interacting protein 1; SMADIP1; Zinc finger homeobox protein 1b

This product is for research use only, not for use in human, therapeutic or diagnostic procedure.

Background

Zinc finger E-box-binding homeobox 2 encoded by ZEB2 is a member of the Zfh1 family of 2-handed zinc finger/homeodomain proteins. It is located in the nucleus and functions as a DNA-binding transcriptional repressor that interacts with activated SMADs. Mutations in this gene are associated with Hirschsprung disease/Mowat-Wilson syndrome. Alternatively spliced transcript variants have been found for this gene.

Recommended Dilution

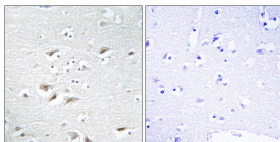
WB: 1: 500 - 1: 2000

IHC: 1: 100 - 1: 300

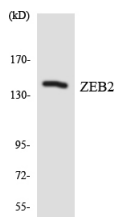
ELISA: 1: 10000

Not yet tested in other applications.

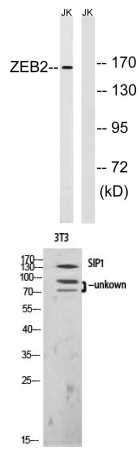
Images



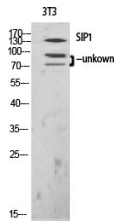
Immunohistochemistry analysis of paraffin-embedded human brain tissue, using ZEB2 Antibody. The picture on the right is blocked with the synthesized peptide.



Western blot analysis of the lysates from HepG2 cells using ZEB2 antibody.



Western blot analysis of lysates from Jurkat cells, using ZEB2 Antibody. The lane on the right is blocked with the synthesized peptide.



Western Blot analysis of various cells using SIP1 Polyclonal Antibody diluted at 1:1000 cells nucleus.

Storage

-20°C for one year

501 Changsheng S Rd, Nanhu Dist, Jiaxing, Zhejiang, China

Tel: 86 21 31007137 | E-mail: save@bt-laboratory.com | www.bt-laboratory.com