

Six1 Polyclonal Antibody

Description

Product type	Primary Antibody
Code	BT-AP08328
Host	Rabbit
Isotype	IgG
Size	20ul, 50ul, 100ul
Immunogen	The antiserum was produced against synthesized peptide derived from human SIX1. AA range:111-160
Mol wt	32210
Species reactivity	Human, Mouse
Clonality	Polyclonal
Recommended application	WB, ELISA
Concentration	1 mg/ml
Full name	Six1 Antibody
Synonyms	SIX1; Homeobox protein SIX1; Sine oculis homeobox homolog 1

This product is for research use only, not for use in human, therapeutic or diagnostic procedure.

Background

The protein encoded by SIX1 (SIX homeobox 1) is a homeobox protein that is similar to the *Drosophila* 'sine oculis' gene product. SIX1 is found in a cluster of related genes on chromosome 14 and is thought to be involved in limb development. Defects in SIX1 are a cause of autosomal dominant deafness type 23 (DFNA23) and branchiootic syndrome type 3 (BOS3).

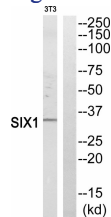
Recommended Dilution

WB: 1: 500 - 1: 2000

ELISA: 1: 20000

Not yet tested in other applications.

Images



Western blot analysis of SIX1 Antibody. The lane on the right is blocked with the SIX1 peptide.

Storage

-20°C for one year