

Six2 Polyclonal Antibody

Description

Product type	Primary Antibody
Code	BT-AP08329
Host	Rabbit
Isotype	IgG
Size	20ul, 50ul, 100ul
Immunogen	Synthesized peptide derived from Six2 . at AA range: 30-110
Mol wt	32286
Species reactivity	Human, Mouse
Clonality	Polyclonal
Recommended application	WB, ELISA
Concentration	1 mg/ml
Full name	Six2 Antibody
Synonyms	SIX2; Homeobox protein SIX2; Sine oculis homeobox homolog 2

This product is for research use only, not for use in human, therapeutic or diagnostic procedure.

Background

SIX2 is a member of the vertebrate gene family which encode proteins homologous to the Drosophila 'sine oculis' homeobox protein. The SIX homeobox 2 is a transcription factor which, like other members of this gene family, may be involved in limb or eye development.

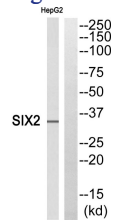
Recommended Dilution

WB: 1: 500 - 1: 2000

ELISA: 1: 40000

Not yet tested in other applications.

Images



Western blot analysis of SIX2 Antibody. The lane on the right is blocked with the SIX2 peptide.

Storage

-20°C for one year