

## 14-3-3-pan(Acetyl Lys51/49) Polyclonal Antibody

### Description

Product type	Primary Antibody
Code	BT-AP08332
Host	Rabbit
Isotype	IgG
Size	20ul, 50ul, 100ul
Immunogen	Synthesized acetyl-peptide derived from human 14-3-3-pan around the acetylation site of K51.
Mol wt	N/A
Species reactivity	Human, Mouse, Rat
Clonality	Polyclonal
Recommended application	WB, ELISA
Concentration	1 mg/ml
Full name	14-3-3 protein beta/alpha/gamma
Synonyms	14-3-3 protein beta/alpha/14-3-3 protein gamma/14-3-3 protein theta/14-3-3 protein zeta/delta/14-3-3 protein sigma; YWHAB; 14-3-3 protein beta/alpha; Protein 1054; Protein kinase C inhibitor protein 1; KCIP-1; YWHAG; 14-3-3 protein gamma; Protein kinase C inhibitor protein 1; KCIP-1; YWHAQ; 14-3-3 protein theta; 14-3-3 protein T-cell; 14-3-3 protein tau; Protein HS1; YWHAZ; 14-3-3 protein zeta/delta; Protein kinase C inhibitor protein 1; KCIP-1; SFN; HME1; 14-3-3 protein sigma; Epithelial cell marker protein 1; Stratifin

This product is for research use only, not for use in human, therapeutic or diagnostic procedure.

### Background

This gene encodes a protein belonging to the 14-3-3 family of proteins| members of which mediate signal transduction by binding to phosphoserine-containing proteins. This highly conserved protein family is found in both plants and mammals. The encoded protein has been shown to interact with RAF1 and CDC25 phosphatases| suggesting that it may play a role in linking mitogenic signaling and the cell cycle machinery. Two transcript variants| which encode the same protein| have been identified for this gene.

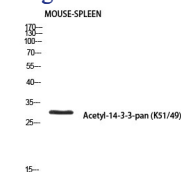
### Recommended Dilution

WB: 1: 500 - 1: 2000

ELISA: 1: 10000

Not yet tested in other applications.

### Images



Western blot analysis of MOUSE-SPLEEN using Acetyl-14-3-3-pan (K51/49) antibody. Antibody was diluted at 1:500. Secondary antibody was diluted at 1:20000

### Storage

-20°C for 1 year

