

Six5 Polyclonal Antibody

Description

Product type	Primary Antibody
Code	BT-AP08333
Host	Rabbit
Isotype	IgG
Size	20ul, 50ul, 100ul
Immunogen	The antiserum was produced against synthesized peptide derived from human SIX5. AA range:201-250
Mol wt	74562
Species reactivity	Human, Mouse
Clonality	Polyclonal
Recommended application	WB, ELISA
Concentration	1 mg/ml
Full name	Six5 Antibody
Synonyms	SIX5; DMAHP; Homeobox protein SIX5; DM locus-associated homeodomain protein; Sine oculis homeobox homolog 5

This product is for research use only, not for use in human, therapeutic or diagnostic procedure.

Background

SIX homeobox 5 encoded by SIX5 is a homeodomain-containing transcription factor that appears to function in the regulation of organogenesis. SIX5 is located downstream of the dystrophia myotonia-protein kinase gene. Mutations in this gene are a cause of branchiootorenal syndrome type 2.

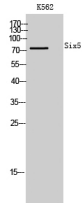
Recommended Dilution

WB: 1: 500 - 1: 2000

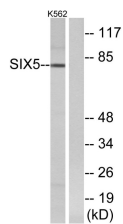
ELISA: 1: 40000

Not yet tested in other applications.

Images



Western Blot analysis of K562 cells using Six5 Polyclonal Antibody



Western blot analysis of lysates from K562 cells, using SIX5 Antibody. The lane on the right is blocked with the synthesized peptide.

Storage

-20°C for one year

501 Changsheng S Rd, Nanhu Dist, Jiaxing, Zhejiang, China

Tel: 86 21 31007137 | E-mail: save@bt-laboratory.com | www.bt-laboratory.com