

SKI-1 Polyclonal Antibody

Description

Product type	Primary Antibody
Code	BT-AP08336
Host	Rabbit
Isotype	IgG
Size	20ul, 50ul, 100ul
Immunogen	Synthesized peptide derived from SKI-1 . at AA range: 180-260
Mol wt	19136
Species reactivity	Human, Mouse, Rat
Clonality	Polyclonal
Recommended application	WB, ELISA
Concentration	1 mg/ml
Full name	SKI-1 Antibody
Synonyms	MBTPS1; KIAA0091; S1P; SKI1; Membrane-bound transcription factor site-1 protease; Endopeptidase S1P; Subtilisin/kexin-isozyme 1; SKI-1

This product is for research use only, not for use in human, therapeutic or diagnostic procedure.

Background

MBTPS1 (membrane bound transcription factor peptidase, site 1) encodes a member of the subtilisin-like proprotein convertase family, which includes proteases that process protein and peptide precursors trafficking through regulated or constitutive branches of the secretory pathway. The encoded protein undergoes an initial autocatalytic processing event in the ER to generate a heterodimer which exits the ER and sorts to the cis/medial-Golgi where a second autocatalytic event takes place and the catalytic activity is acquired. It encodes a type 1 membrane bound protease which is ubiquitously expressed and regulates cholesterol or lipid homeostasis via cleavage of substrates at non-basic residues. Mutations in MBTPS1 may be associated with lysosomal dysfunction.

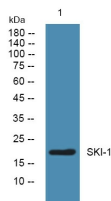
Recommended Dilution

WB: 1: 500 - 1: 2000

ELISA: 1: 10000

Not yet tested in other applications.

Images



Western blot analysis of lysates from HCT116 cells, primary antibody was diluted at 1:1000, 4°over night

Storage

-20°C for one year