

Cytokeratin 18(Phospho Ser33) Polyclonal Antibody

Description

Product type	Primary Antibody
Code	BT-AP08344
Host	Rabbit
Isotype	IgG
Size	20ul, 50ul, 100ul
Immunogen	The antiserum was produced against synthesized peptide derived from human Keratin 18 around the phosphorylation site of Ser33. AA range:1-50
Mol wt	47927
Species reactivity	Human, Mouse, Rat
Clonality	Polyclonal
Recommended application	WB, IHC-p, IF, ICC, ELISA
Concentration	1 mg/ml
Full name	Keratin type I cytoskeletal 18
Synonyms	Keratin type I cytoskeletal 18; KRT18; CYK18; PIG46; Keratin; type I cytoskeletal 18; Cell proliferation-inducing gene 46 protein; Cytokeratin-18; CK-18; Keratin-18; K18

This product is for research use only, not for use in human, therapeutic or diagnostic procedure.

Background

KRT18 encodes the type I intermediate filament chain keratin 18. Keratin 18, together with its filament partner keratin 8, are perhaps the most commonly found members of the intermediate filament gene family. They are expressed in single layer epithelial tissues of the body. Mutations in this gene have been linked to cryptogenic cirrhosis. Two transcript variants encoding the same protein have been found for this gene.

Recommended Dilution

WB: 1: 500 - 1: 2000

IHC-p: 1: 100 - 1: 300

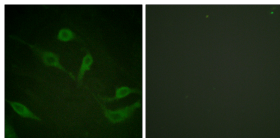
IF: 1: 200 - 1: 1000

ICC: 1: 200 - 1: 1000

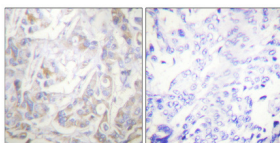
ELISA: 1: 5000

Not yet tested in other applications.

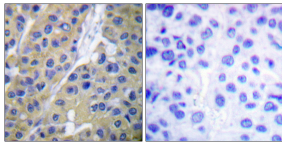
Images



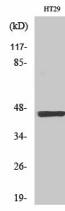
Immunofluorescence analysis of HeLa cells, using Keratin 18 (Phospho-Ser33) Antibody. The picture on the right is blocked with the phospho peptide.



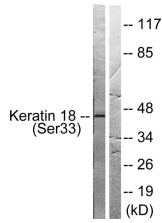
Immunohistochemical analysis of paraffin-embedded Human breast cancer. Antibody was diluted at 1:100(4°C overnight). High-pressure and temperature Tris-EDTA,pH8.0 was used for antigen retrieval. Negative control (right) obtained from antibody was pre-absorbed by immunogen peptide.



Immunohistochemistry analysis of paraffin-embedded human breast carcinoma, using Keratin 18 (Phospho-Ser33) Antibody. The picture on the right is blocked with the phospho peptide.



Western Blot analysis of various cells using Phospho-Cytokeratin 18 (S33) Polyclonal Antibody diluted at 1:2000



Western blot analysis of lysates from HT29 cells, using Keratin 18 (Phospho-Ser33) Antibody. The lane on the right is blocked with the phospho peptide.

Storage

-20°C for 1 year

501 Changsheng S Rd, Nanhu Dist, Jiaxing, Zhejiang, China

Tel: 86 21 31007137 | E-mail: save@bt-laboratory.com | www.bt-laboratory.com