

SLC10A7 Polyclonal Antibody

Description

Product type	Primary Antibody
Code	BT-AP08351
Host	Rabbit
Isotype	IgG
Size	20ul, 50ul, 100ul
Immunogen	The antiserum was produced against synthesized peptide derived from human SLC10A7. AA range:168-217
Mol wt	39485
Species reactivity	Human, Mouse, Rat
Clonality	Polyclonal
Recommended application	WB, ELISA
Concentration	1 mg/ml
Full name	SLC10A7 Antibody
Synonyms	SLC10A7; C4orf13; P7; PSEC0051; Sodium/bile acid cotransporter 7; Na(+)/bile acid cotransporter 7; Solute carrier family 10 member 7

This product is for research use only, not for use in human, therapeutic or diagnostic procedure.

Background

SLC10A7 (Solute Carrier Family 10 Member 7) is a Protein Coding gene. GO annotations related to this gene include symporter activity.

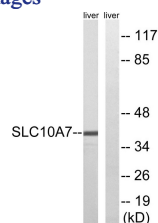
Recommended Dilution

WB: 1: 500 - 1: 2000

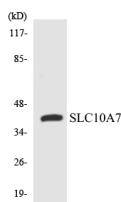
ELISA: 1: 40000

Not yet tested in other applications.

Images



Western blot analysis of lysates from mouse liver, using SLC10A7 Antibody. The lane on the right is blocked with the synthesized peptide.



Western blot analysis of the lysates from 293 cells using SLC10A7 antibody.

Storage

-20°C for one year

