

SLC17A2 Polyclonal Antibody

Description

Product type	Primary Antibody
Code	BT-AP08353
Host	Rabbit
Isotype	IgG
Size	20ul, 50ul, 100ul
Immunogen	The antiserum was produced against synthesized peptide derived from human SLC17A2. AA range:213-262
Mol wt	47277
Species reactivity	Human, Mouse
Clonality	Polyclonal
Recommended application	WB, ELISA
Concentration	1 mg/ml
Full name	SLC17A2 Antibody
Synonyms	SLC17A2; NPT3; Sodium-dependent phosphate transport protein 3; Na(+)/PI cotransporter 3; Sodium/phosphate cotransporter 3; Solute carrier family 17 member 2

This product is for research use only, not for use in human, therapeutic or diagnostic procedure.

Background

May be involved in actively transporting phosphate into cells via Na(+) cotransport.

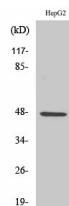
Recommended Dilution

WB: 1: 500 - 1: 2000

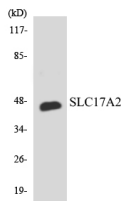
ELISA: 1: 40000

Not yet tested in other applications.

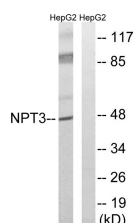
Images



Western Blot analysis of various cells using SLC17A2 Polyclonal Antibody



Western blot analysis of the lysates from RAW264.7 cells using SLC17A2 antibody.



Western blot analysis of lysates from HepG2 cells, using SLC17A2 Antibody. The lane on the right is blocked with the synthesized peptide.

Storage

-20°C for one year

501 Changsheng S Rd, Nanhu Dist, Jiaxing, Zhejiang, China

Tel: 86 21 31007137 | E-mail: save@bt-laboratory.com | www.bt-laboratory.com