

## SLC4A8/10 Polyclonal Antibody

### Description

<b>Product type</b>	Primary Antibody
<b>Code</b>	BT-AP08355
<b>Host</b>	Rabbit
<b>Isotype</b>	IgG
<b>Size</b>	20ul, 50ul, 100ul
<b>Immunogen</b>	The antiserum was produced against synthesized peptide derived from human SLC4A8/10. AA range:411-460
<b>Mol wt</b>	125946
<b>Species reactivity</b>	Human, Mouse, Rat
<b>Clonality</b>	Polyclonal
<b>Recommended application</b>	WB, IHC-p, ELISA
<b>Concentration</b>	1 mg/ml
<b>Full name</b>	SLC4A8/10 Antibody
<b>Synonyms</b>	SLC4A8; KIAA0739; NBC; NBC3; NDCBE1; Electroneutral sodium bicarbonate exchanger 1; Electroneutral Na(+)-driven Cl-HCO <sub>3</sub> exchanger; Solute carrier family 4 member 8; k-NBC3; SLC4A10; NCBE; Sodium-drive

**This product is for research use only, not for use in human, therapeutic or diagnostic procedure.**

### Background

SLC4A10 (solute carrier family 4 member 10) belongs to a small family of sodium-coupled bicarbonate transporters (NCBTs) that regulate the intracellular pH of neurons, the secretion of bicarbonate ions across the choroid plexus, and the pH of the brain extracellular fluid. The protein encoded by SLC4A10 was initially identified as a sodium-driven chloride bicarbonate exchanger (NCBE) though there is now evidence that its sodium/bicarbonate cotransport activity is independent of any chloride ion countertransport under physiological conditions. SLC4A10 is now classified as a member A10 of the SLC4 family of transmembrane solute carriers. Alternative splicing results in multiple transcript variants encoding distinct isoforms.

### Recommended Dilution

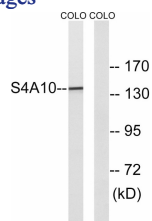
WB: 1: 500 - 1: 2000

IHC: 1: 100 - 1: 300

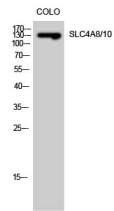
ELISA: 1: 40000

Not yet tested in other applications.

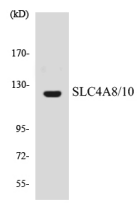
### Images



Western blot analysis of lysates from COLO cells, using SLC4A8/10 Antibody. The lane on the right is blocked with the synthesized peptide.



Western Blot analysis of COLO cells using SLC4A8/10 Polyclonal Antibody diluted at 1:500



Western blot analysis of the lysates from HUVEC cells using SLC4A8/10 antibody.

### Storage

-20°C for one year

501 Changsheng S Rd, Nanhu Dist, Jiaxing, Zhejiang, China

Tel: 86 21 31007137 | E-mail: [save@bt-laboratory.com](mailto:save@bt-laboratory.com) | [www.bt-laboratory.com](http://www.bt-laboratory.com)