

## SLC6A14 Polyclonal Antibody

### Description

Product type	Primary Antibody
Code	BT-AP08356
Host	Rabbit
Isotype	IgG
Size	20ul, 50ul, 100ul
Immunogen	Synthesized peptide derived from the C-terminal region of human SLC6A14.
Mol wt	72153
Species reactivity	Human
Clonality	Polyclonal
Recommended application	WB, IHC-p, ELISA
Concentration	1 mg/ml
Full name	SLC6A14 Antibody
Synonyms	SLC6A14; Sodium- and chloride-dependent neutral and basic amino acid transporter B(0+); Amino acid transporter ATB0+; Solute carrier family 6 member 14

This product is for research use only, not for use in human, therapeutic or diagnostic procedure.

### Background

SLC6A14 encodes a member of the solute carrier family 6. Members of this family are sodium and chloride dependent neurotransmitter transporters. The sodium- and chloride-dependent neutral and basic amino acid transporter B(0+) transports both neutral and cationic amino acids. This protein may also function as a beta-alanine carrier. Mutations in this gene may be associated with X-linked obesity. A pseudogene of this gene is found on chromosome X.

### Recommended Dilution

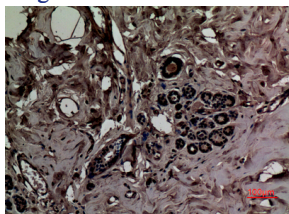
WB: 1: 500 - 1: 2000

IHC-p: 1: 100 - 300

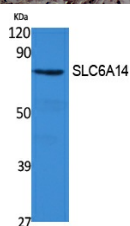
ELISA: 1: 40000

Not yet tested in other applications.

### Images



Immunohistochemical analysis of paraffin-embedded human-breast, antibody was diluted at 1:100



Western Blot analysis of extracts from 293 cells, using SLC6A14 Polyclonal Antibody. Secondary antibody was diluted at 1:20000

## Storage

-20°C for one year

501 Changsheng S Rd, Nanhu Dist, Jiaxing, Zhejiang, China

Tel: 86 21 31007137 | E-mail: [save@bt-laboratory.com](mailto:save@bt-laboratory.com) | [www.bt-laboratory.com](http://www.bt-laboratory.com)