

## SLC6A15 Polyclonal Antibody

### Description

Product type	Primary Antibody
Code	BT-AP08357
Host	Rabbit
Isotype	IgG
Size	20ul, 50ul, 100ul
Immunogen	The antiserum was produced against synthesized peptide derived from human SLC6A15. AA range:32-81
Mol wt	81836
Species reactivity	Human
Clonality	Polyclonal
Recommended application	WB, ELISA
Concentration	1 mg/ml
Full name	SLC6A15 Antibody
Synonyms	SLC6A15; B0AT2; NTT73; SBAT1; Sodium-dependent neutral amino acid transporter B(0)AT2; Sodium- and chloride-dependent neurotransmitter transporter NTT73; Sodium-coupled branched-chain amino-acid trans

This product is for research use only, not for use in human, therapeutic or diagnostic procedure.

### Background

SLC6A15 (solute carrier family 6 member 15) encodes a member of the solute carrier family 6 protein family which transports neutral amino acids. The encoded protein is thought to play a role in neuronal amino acid transport (PMID: 16185194) and may be associated with major depression (PMID: 21521612). Multiple transcript variants encoding different isoforms have been found for SLC6A15.

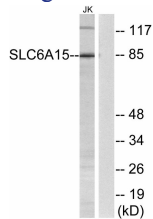
### Recommended Dilution

WB: 1: 500 - 1: 2000

ELISA: 1: 40000

Not yet tested in other applications.

### Images



Western blot analysis of lysates from Jurkat cells, using SLC6A15 Antibody. The lane on the right is blocked with the synthesized peptide.

### Storage

-20°C for one year