

## SLK Polyclonal Antibody

### Description

<b>Product type</b>	Primary Antibody
<b>Code</b>	BT-AP08365
<b>Host</b>	Rabbit
<b>Isotype</b>	IgG
<b>Size</b>	20ul, 50ul, 100ul
<b>Immunogen</b>	The antiserum was produced against synthesized peptide derived from human SLK. AA range:1151-1200
<b>Mol wt</b>	142695
<b>Species reactivity</b>	Human, Mouse, Rat
<b>Clonality</b>	Polyclonal
<b>Recommended application</b>	WB, IHC-p, IF, ELISA
<b>Concentration</b>	1 mg/ml
<b>Full name</b>	SLK Antibody
<b>Synonyms</b>	SLK; KIAA0204; STK2; STE20-like serine/threonine-protein kinase; STE20-like kinase; hSLK; CTCL tumor antigen se20-9; STE20-related serine/threonine-protein kinase; STE20-related kinase; Serine/threoni

**This product is for research use only, not for use in human, therapeutic or diagnostic procedure.**

### Background

SLK (STE20 Like Kinase) is a Protein Coding gene. Diseases associated with SLK include amyotrophic lateral sclerosis 9. Among its related pathways are Oocyte meiosis and Mitotic Roles of Polo Like Kinases. Gene Ontology (GO) annotations related to this gene include protein homodimerization activity and transferase activity, transferring phosphorus-containing groups. An important paralog of this gene is MAP4K3. Mediates apoptosis and actin stress fiber dissolution.

### Recommended Dilution

WB: 1: 500 - 1: 2000

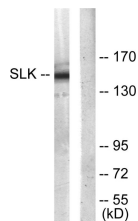
IHC: 1: 100 - 1: 300

IF: 1: 200 - 1: 1000

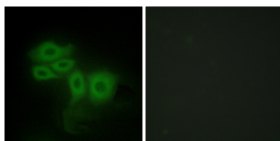
ELISA: 1: 5000

Not yet tested in other applications.

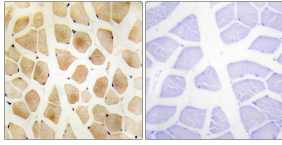
### Images



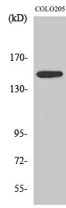
Western blot analysis of lysates from COLO205 cells, using SLK Antibody. The lane on the right is blocked with the synthesized peptide.



Immunofluorescence analysis of HepG2 cells, using SLK Antibody. The picture on the right is blocked with the synthesized peptide.



Immunohistochemistry analysis of paraffin-embedded human skeletal muscle tissue, using SLK Antibody. The picture on the right is blocked with the synthesized peptide.



Western Blot analysis of various cells using SLK Polyclonal Antibody diluted at 1:1000

### Storage

-20°C for one year

501 Changsheng S Rd, Nanhu Dist, Jiaxing, Zhejiang, China

Tel: 86 21 31007137 | E-mail: [save@bt-laboratory.com](mailto:save@bt-laboratory.com) | [www.bt-laboratory.com](http://www.bt-laboratory.com)