

DARPP-32(Phospho Thr34) Polyclonal Antibody

Description

Product type	Primary Antibody
Code	BT-AP08380
Host	Rabbit
Isotype	IgG
Size	20ul, 50ul, 100ul
Immunogen	The antiserum was produced against synthesized peptide derived from human DARPP-32 around the phosphorylation site of Thr34. AA range:18-67
Mol wt	22963
Species reactivity	Human, Mouse, Rat
Clonality	Polyclonal
Recommended application	WB, IHC-p, IF, ICC, ELISA
Concentration	1 mg/ml
Full name	Protein phosphatase 1 regulatory subunit 1B
Synonyms	Protein phosphatase 1 regulatory subunit 1B; PPP1R1B; DARPP32; Protein phosphatase 1 regulatory subunit 1B; DARPP-32; Dopamine- and cAMP-regulated neuronal phosphoprotein

This product is for research use only, not for use in human, therapeutic or diagnostic procedure.

Background

This gene encodes a bifunctional signal transduction molecule. Dopaminergic and glutamatergic receptor stimulation regulates its phosphorylation and function as a kinase or phosphatase inhibitor. As a target for dopamine, this gene may serve as a therapeutic target for neurologic and psychiatric disorders. Multiple transcript variants encoding different isoforms have been found for this gene.

Recommended Dilution

WB: 1: 500 - 1: 2000

IHC-p: 1: 100 - 1: 300

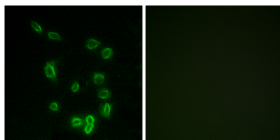
IF: 1: 200 - 1: 1000

ICC: 1: 200 - 1: 1000

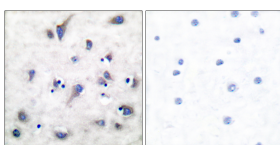
ELISA: 1: 10000

Not yet tested in other applications.

Images

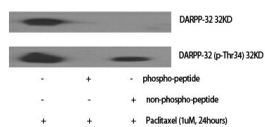


Immunofluorescence analysis of HepG2 cells, using DARPP-32 (Phospho-Thr34) Antibody. The picture on the right is blocked with the phospho peptide.

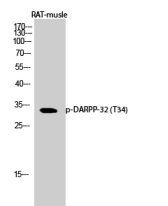


Immunohistochemistry analysis of paraffin-embedded human brain, using DARPP-32 (Phospho-Thr34) Antibody. The picture on the right is blocked with the phospho peptide.

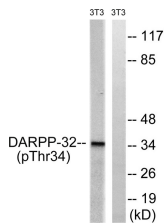
Western Blot analysis of various cells using Phospho-DARPP-32 (T34) Polyclonal Antibody diluted at 1:1000



Western Blot analysis of RAT-muscle cells using Phospho-DARPP-32 (T34) Polyclonal Antibody diluted at 1:1000



Western blot analysis of lysates from NIH/3T3 cells treated with PMA 125ng/ml 30', using DARPP-32 (Phospho-Thr34) Antibody. The lane on the right is blocked with the phospho peptide.



Storage

-20°C for 1 year

501 Changsheng S Rd, Nanhu Dist, Jiaxing, Zhejiang, China

Tel: 86 21 31007137 | E-mail: save@bt-laboratory.com | www.bt-laboratory.com