

Smad3 Polyclonal Antibody

Description

Product type	Primary Antibody
Code	BT-AP08391
Host	Rabbit
Isotype	IgG
Size	20ul, 50ul, 100ul
Immunogen	Synthesized peptide derived from human Smad3 around the non-phosphorylation site of S213.
Mol wt	48081
Species reactivity	Human
Clonality	Polyclonal
Recommended application	WB, IHC-p
Concentration	1 mg/ml
Full name	Smad3 Antibody
Synonyms	SMAD3; MADH3; Mothers against decapentaplegic homolog 3; MAD homolog 3; Mad3; Mothers against DPP homolog 3; hMAD-3; JV15-2; SMAD family member 3; SMAD 3; Smad3; hSMAD3

This product is for research use only, not for use in human, therapeutic or diagnostic procedure.

Background

The protein encoded by SMAD3 belongs to the SMAD, a family of proteins similar to the gene products of the Drosophila gene 'mothers against decapentaplegic' (Mad) and the C. elegans gene Sma. SMAD proteins are signal transducers and transcriptional modulators that mediate multiple signaling pathways. This protein functions as a transcriptional modulator activated by transforming growth factor-beta and is thought to play a role in the regulation of carcinogenesis.

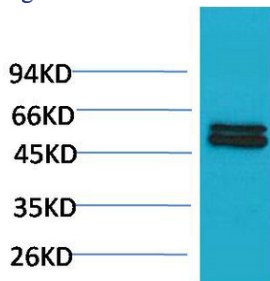
Recommended Dilution

WB: 1: 500 - 1: 2000

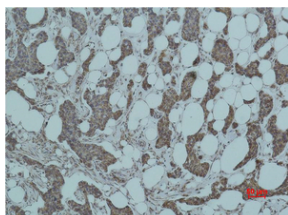
IHC-p: 1: 50 - 300

Not yet tested in other applications.

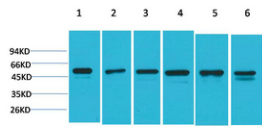
Images



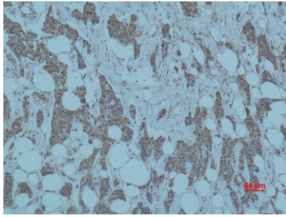
Western blot analysis of A431 using Smad3 Polyclonal Antibody. Secondary antibody was diluted at 1:20000



Immunohistochemical analysis of paraffin-embedded human Breast carcinoma using Smad3 Polyclonal Antibody.



Western blot analysis of 1) A431, 2) Hela, 3) C2C12, 4) 3T3, 5) PC12, 6) Rat Brain Tissue using Smad3 Polyclonal Antibody. Secondary antibody was diluted at 1:20000



Immunohistochemical analysis of paraffin-embedded human Breast carcinoma using Smad3 Polyclonal Antibody.

Storage

-20°C for one year

501 Changsheng S Rd, Nanhu Dist, Jiaxing, Zhejiang, China

Tel: 86 21 31007137 | E-mail: save@bt-laboratory.com | www.bt-laboratory.com