

DCAM Polyclonal Antibody

Description

Product type	Primary Antibody
Code	BT-AP08397
Host	Rabbit
Isotype	IgG
Size	20ul, 50ul, 100ul
Immunogen	Synthesized peptide derived from part region of human protein
Mol wt	N/A
Species reactivity	Human, Rat
Clonality	Polyclonal
Recommended application	WB, ELISA
Concentration	1 mg/ml
Full name	S-adenosylmethionine decarboxylase proenzyme
Synonyms	S-adenosylmethionine decarboxylase proenzyme ;AdoMetDC;SAMDC;EC 4.1.1.50 [Cleaved into: S-adenosylmethionine decarboxylase alpha chain; S-adenosylmethionine decarboxylase beta chain]

This product is for research use only, not for use in human, therapeutic or diagnostic procedure.

Background

This gene encodes an important intermediate enzyme in polyamine biosynthesis. The polyamines spermine, spermidine, and putrescine are low-molecular-weight aliphatic amines essential for cellular proliferation and tumor promotion. Multiple alternatively spliced transcript variants have been identified. Pseudogenes of this gene are found on chromosomes 5, 6, 10, X and Y.

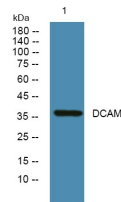
Recommended Dilution

WB: 1: 500 - 1: 2000

ELISA: 1: 5000 - 1: 20000

Not yet tested in other applications.

Images



Western blot analysis of lysates from HCT116 cells, primary antibody was diluted at 1:1000, 4°C overnight

Storage

-20°C for 1 year