

4E-BP1(Phospho Ser65) Polyclonal Antibody

Description

Product type	Primary Antibody
Code	BT-AP08404
Host	Rabbit
Isotype	IgG
Size	20ul, 50ul, 100ul
Immunogen	The antiserum was produced against synthesized peptide derived from human 4E-BP1 around the phosphorylation site of Ser64. AA range:30-79
Mol wt	12449
Species reactivity	Human, Mouse, Rat
Clonality	Polyclonal
Recommended application	WB, IHC-p, IF, ELISA
Concentration	1 mg/ml
Full name	Eukaryotic translation initiation factor 4E-binding protein 1
Synonyms	Eukaryotic translation initiation factor 4E-binding protein 1; EIF4EBP1; Eukaryotic translation initiation factor 4E-binding protein 1; 4E-BP1; eIF4E-binding protein 1; Phosphorylated heat- and acid-stable protein regulated by insulin 1; PHAS-I

This product is for research use only, not for use in human, therapeutic or diagnostic procedure.

Background

This gene encodes one member of a family of translation repressor proteins. The protein directly interacts with eukaryotic translation initiation factor 4E (eIF4E) which is a limiting component of the multisubunit complex that recruits 40S ribosomal subunits to the 5' end of mRNAs. Interaction of this protein with eIF4E inhibits complex assembly and represses translation. This protein is phosphorylated in response to various signals including UV irradiation and insulin signaling resulting in its dissociation from eIF4E and activation of mRNA translation.

Recommended Dilution

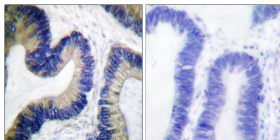
WB: 1: 500 - 1: 2000

IHC-p: 1: 100 - 1: 300

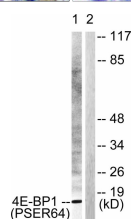
ELISA: 1: 10000

Not yet tested in other applications.

Images



Immunohistochemistry analysis of paraffin-embedded human colon carcinoma, using 4E-BP1 (Phospho-Ser64) Antibody. The picture on the right is blocked with the phospho peptide.



Western blot analysis of lysates from Jurkat cells treated with Insulin 0.01U/ml 15', using 4E-BP1 (Phospho-Ser64) Antibody. The lane on the right is blocked with the phospho peptide.

Storage

-20°C for 1 year

501 Changsheng S Rd, Nanhu Dist, Jiaxing, Zhejiang, China

Tel: 86 21 31007137 | E-mail: save@bt-laboratory.com | www.bt-laboratory.com