

SMF Polyclonal Antibody

Description

Product type	Primary Antibody
Code	BT-AP08405
Host	Rabbit
Isotype	IgG
Size	20ul, 50ul, 100ul
Immunogen	The antiserum was produced against synthesized peptide derived from human HMGXB3. AA range:131-180
Mol wt	168334
Species reactivity	Human
Clonality	Polyclonal
Recommended application	IHC-p, ELISA
Concentration	1 mg/ml
Full name	SMF Antibody
Synonyms	HMGXB3; KIAA0194; SMF; HMG domain-containing protein 3; HMG box-containing protein 3; Protein SMF

This product is for research use only, not for use in human, therapeutic or diagnostic procedure.

Background

HMGXB3 is one of the non-canonical high mobility group (HMG) genes. The HMG-box containing 3 contains an HMG-box domain found in DNA binding proteins such as transcription factors and chromosomal proteins.

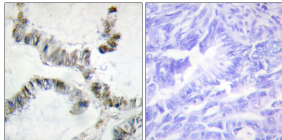
Recommended Dilution

IHC: 1: 100 - 1: 300

ELISA: 1: 20000

Not yet tested in other applications.

Images



Immunohistochemistry analysis of paraffin-embedded human colon carcinoma, using SMF Antibody. The picture on the right is blocked with the synthesized peptide.

Storage

-20°C for one year

501 Changsheng S Rd, Nanhu Dist, Jiaxing, Zhejiang, China

Tel: 86 21 31007137 | E-mail: save@bt-laboratory.com | www.bt-laboratory.com