

## DCT Polyclonal Antibody

### Description

|                                |  |
|--------------------------------|--|
| <b>Product type</b>            | Primary Antibody   |
| <b>Code</b>                    | BT-AP08407   |
| <b>Host</b>                    | Rabbit   |
| <b>Isotype</b>                 | IgG  |
| <b>Size</b>                    | 20ul, 50ul, 100ul  |
| <b>Immunogen</b>               | Synthetic peptide from human protein at AA range: 171-244  |
| <b>Mol wt</b>                  | N/A  |
| <b>Species reactivity</b>      | Human, Mouse   |
| <b>Clonality</b>               | Polyclonal   |
| <b>Recommended application</b> | WB, ELISA  |
| <b>Concentration</b>           | 1 mg/ml  |
| <b>Full name</b>               | DCT  |
| <b>Synonyms</b>                | DCT; L-dopachrome tautomerase; DCT; DT; EC 5.3.3.12; L-dopachrome Delta-isomerase; Tyrosinase-related protein 2; TRP-2; TRP2 |

This product is for research use only, not for use in human, therapeutic or diagnostic procedure.

### Background

Catalytic activity:L-dopachrome = 5,6-dihydroxyindole-2-carboxylate.,cofactor:Binds 2 zinc ions per subunit.,Involved in regulating eumelanin and pheomelanin levels.,pathway:Pigment biosynthesis; melanin biosynthesis.,Belongs to the tyrosinase family.,subunit:Tyrosinase, TYRP1 and TYRP2 may form a multienzyme complex.,

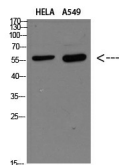
### Recommended Dilution

WB: 1: 500 - 1: 2000

ELISA: 1: 10000 - 1: 20000

Not yet tested in other applications.

### Images



Western blot analysis of HELA A549 Cell Lysate, antibody was diluted at 1:1000. Secondary antibody was diluted at 1:20000

### Storage

-20°C for 1 year