

SMIT Polyclonal Antibody

Description

Product type	Primary Antibody
Code	BT-AP08409
Host	Rabbit
Isotype	IgG
Size	20ul, 50ul, 100ul
Immunogen	The antiserum was produced against synthesized peptide derived from human SLC5A3. AA range:221-270
Mol wt	79694
Species reactivity	Human, Mouse, Rat
Clonality	Polyclonal
Recommended application	WB, ELISA
Concentration	1 mg/ml
Full name	SMIT Antibody
Synonyms	SLC5A3; Sodium/myo-inositol cotransporter; Na(+)/myo-inositol cotransporter; Sodium/myo-inositol transporter 1; SMIT1; Solute carrier family 5 member 3

This product is for research use only, not for use in human, therapeutic or diagnostic procedure.

Background

Prevents intracellular accumulation of high concentrations of myo-inositol (an osmolyte) that result in impairment of cellular function.

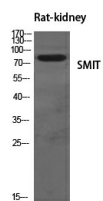
Recommended Dilution

WB: 1: 500 - 1: 2000

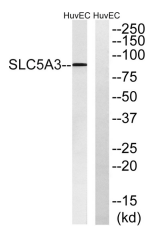
ELISA: 1: 10000

Not yet tested in other applications.

Images



Western Blot analysis of various cells using SMIT Polyclonal Antibody diluted at 1:500



Western blot analysis of lysates from HUVEC cells, using SLC5A3 Antibody. The lane on the right is blocked with the synthesized peptide.



Western Blot analysis of HuvEc cells using SMIT Polyclonal Antibody diluted at 1:500

Storage

-20°C for one year

501 Changsheng S Rd, Nanhu Dist, Jiaxing, Zhejiang, China

Tel: 86 21 31007137 | E-mail: save@bt-laboratory.com | www.bt-laboratory.com