

## SMRTe Polyclonal Antibody

### Description

<b>Product type</b>	Primary Antibody
<b>Code</b>	BT-AP08413
<b>Host</b>	Rabbit
<b>Isotype</b>	IgG
<b>Size</b>	20ul, 50ul, 100ul
<b>Immunogen</b>	The antiserum was produced against synthesized peptide derived from human NCOR2. AA range:511-560
<b>Mol wt</b>	274034
<b>Species reactivity</b>	Human
<b>Clonality</b>	Polyclonal
<b>Recommended application</b>	IHC-p, IF, WB, ELISA
<b>Concentration</b>	1 mg/ml
<b>Full name</b>	SMRTe Antibody
<b>Synonyms</b>	NCOR2; CTG26; Nuclear receptor corepressor 2; N-CoR2; CTG repeat protein 26; SMAP270; Silencing mediator of retinoic acid and thyroid hormone receptor; SMRT; T3 receptor-associating factor; TRAC; Thyr

**This product is for research use only, not for use in human, therapeutic or diagnostic procedure.**

### Background

NCOR2 (nuclear receptor corepressor 2) encodes a nuclear receptor co-repressor that mediates transcriptional silencing of certain target genes. The encoded protein is a member of a family of thyroid hormone- and retinoic acid receptor-associated co-repressors. This protein acts as part of a multisubunit complex which includes histone deacetylases to modify chromatin structure that prevents basal transcriptional activity of target genes. Aberrant expression of NCOR2 is associated with certain cancers. Alternate splicing results in multiple transcript variants encoding different isoforms.

### Recommended Dilution

WB: 1: 500 - 2000

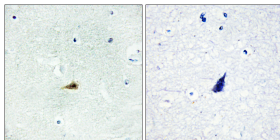
IF: 1: 200 - 1: 1000

ELISA: 1: 20000

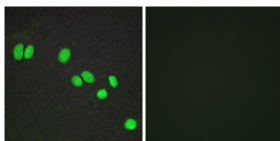
IHC: 1: 100 - 1: 300

Not yet tested in other applications.

### Images



Immunohistochemistry analysis of paraffin-embedded human brain tissue, using NCOR2 Antibody. The picture on the right is blocked with the synthesized peptide.



Immunofluorescence analysis of A549 cells, using NCOR2 Antibody. The picture on the right is blocked with the synthesized peptide.

### Storage

-20°C for one year

501 Changsheng S Rd, Nanhu Dist, Jiaxing, Zhejiang, China

Tel: 86 21 31007137 | E-mail: [save@bt-laboratory.com](mailto:save@bt-laboratory.com) | [www.bt-laboratory.com](http://www.bt-laboratory.com)