

SMUG1 Polyclonal Antibody

Description

Product type	Primary Antibody
Code	BT-AP08415
Host	Rabbit
Isotype	IgG
Size	20ul, 50ul, 100ul
Immunogen	The antiserum was produced against synthesized peptide derived from human SMUG1. AA range:91-140
Mol wt	29862
Species reactivity	Human, Mouse, Rat, Monkey
Clonality	Polyclonal
Recommended application	WB, IHC-p, ELISA
Concentration	1 mg/ml
Full name	SMUG1 Antibody
Synonyms	SMUG1; Single-strand selective monofunctional uracil DNA glycosylase

This product is for research use only, not for use in human, therapeutic or diagnostic procedure.

Background

SMUG1 encodes a protein that participates in base excision repair by removing uracil from single- and double-stranded DNA. Many alternatively spliced transcript variants exist for this gene; the full-length nature is known for some but not all of the variants.

Recommended Dilution

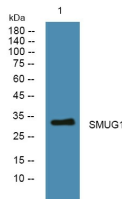
WB: 1: 500 - 1: 2000

IHC: 1: 100 - 1: 300

ELISA: 1: 40000

Not yet tested in other applications.

Images



Western blot analysis of lysates from Jarkat cells, primary antibody was diluted at 1:1000, 4^oover night

Storage

-20°C for one year